

Visitor Experience and Views

You said: “The ‘hills’ built along the A40 with the material from the build of Wembley Stadium have been very successful recreational spaces. Have you considered doing something similar?”

We did:

Provide a series of publicly accessible routes

Proposals include several new footpaths, cycle routes and bridleways together with the realignment and partial upgrade of existing public rights of way (PRoW) impacted by the railway.

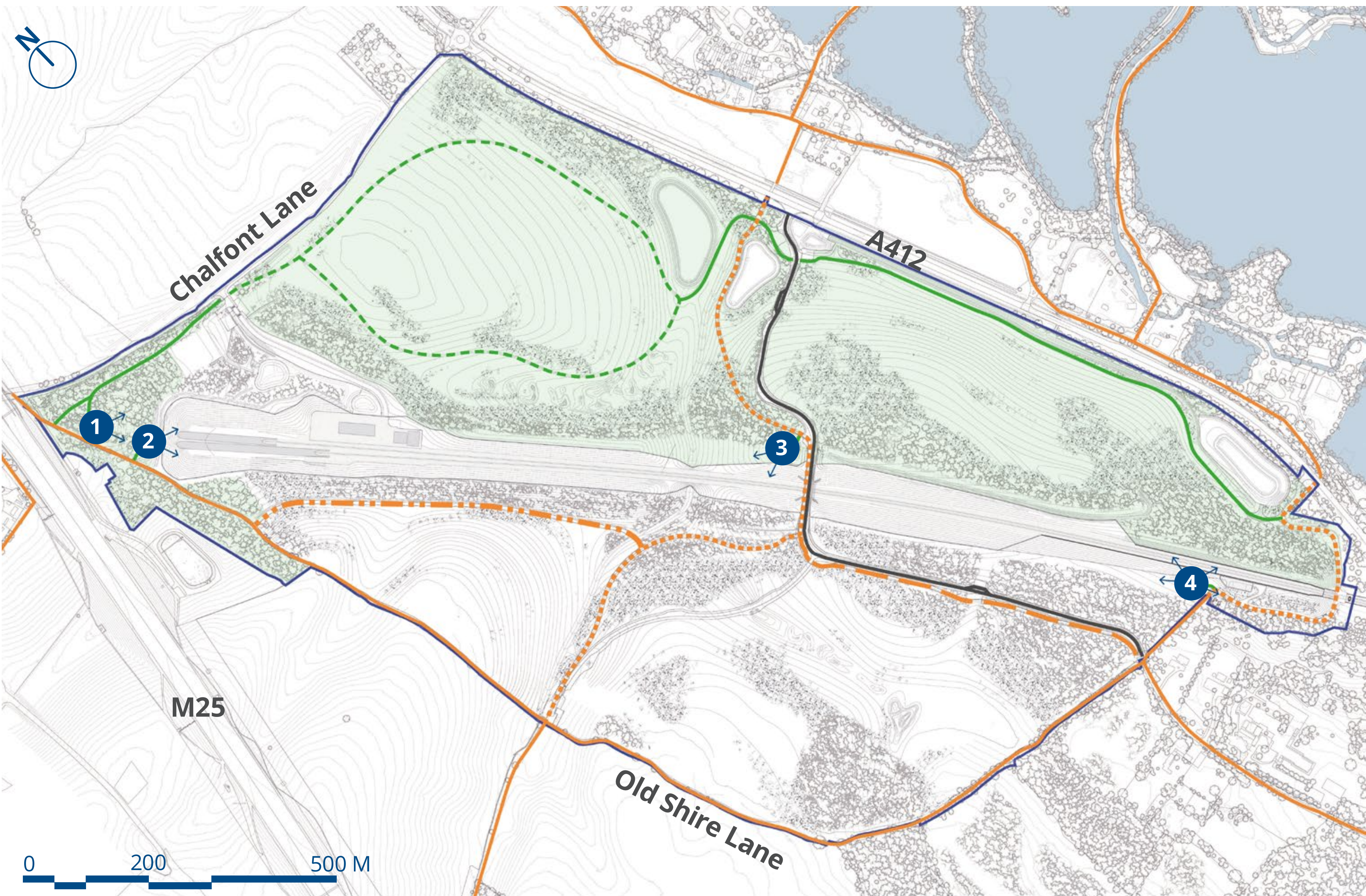
These routes will be connected to the wider footpath and cycle network where they meet with the CVWS boundary, and will form part of a broader recreational offer which will be delivered by the HS2 project.



Visualisation - Ground level view from footpath Rickmansworth 004 looking south west (Year 15)

Key

- PRoW (existing) - realigned by HS2
- PRoW (new) - proposed by HS2
- PRoW (new - cantering path) - realigned by HS2
- Tilehouse Lane realignment
- Permissive path (surfaced)
- Permissive path (not surfaced)
- Existing definitive routes
- Land parcels typically with public access
- HS2 viewing areas - (Refer to following board for visuals of viewing areas)



Site plan - Rights of way provision

Visitor Experience and Views

You said: “Maintaining the magnificent views across the Colne Valley is essential.”

We did:

Create a series of viewing areas

The design seeks to enhance the visual experience and provides opportunities to view the railway from set locations, and also to view the CVWS in its broader setting by establishing open vistas from higher ground.

In other locations, where HS2 infrastructure has the potential to be an unattractive element, views of the railway are typically concealed using a combination of planting and/or landform.



Visualisation - View from the Tilehouse cutting viewing area 4, looking north east (Year 15)

Viewing areas



(Viewing area 1)



(Viewing area 3)



(Viewing area 4)

Visualisations - Viewing areas (Year 15)



(Viewing area 2)

Visualisation - View from the Chiltern Tunnel South Portal viewing area looking south east (Year 15)

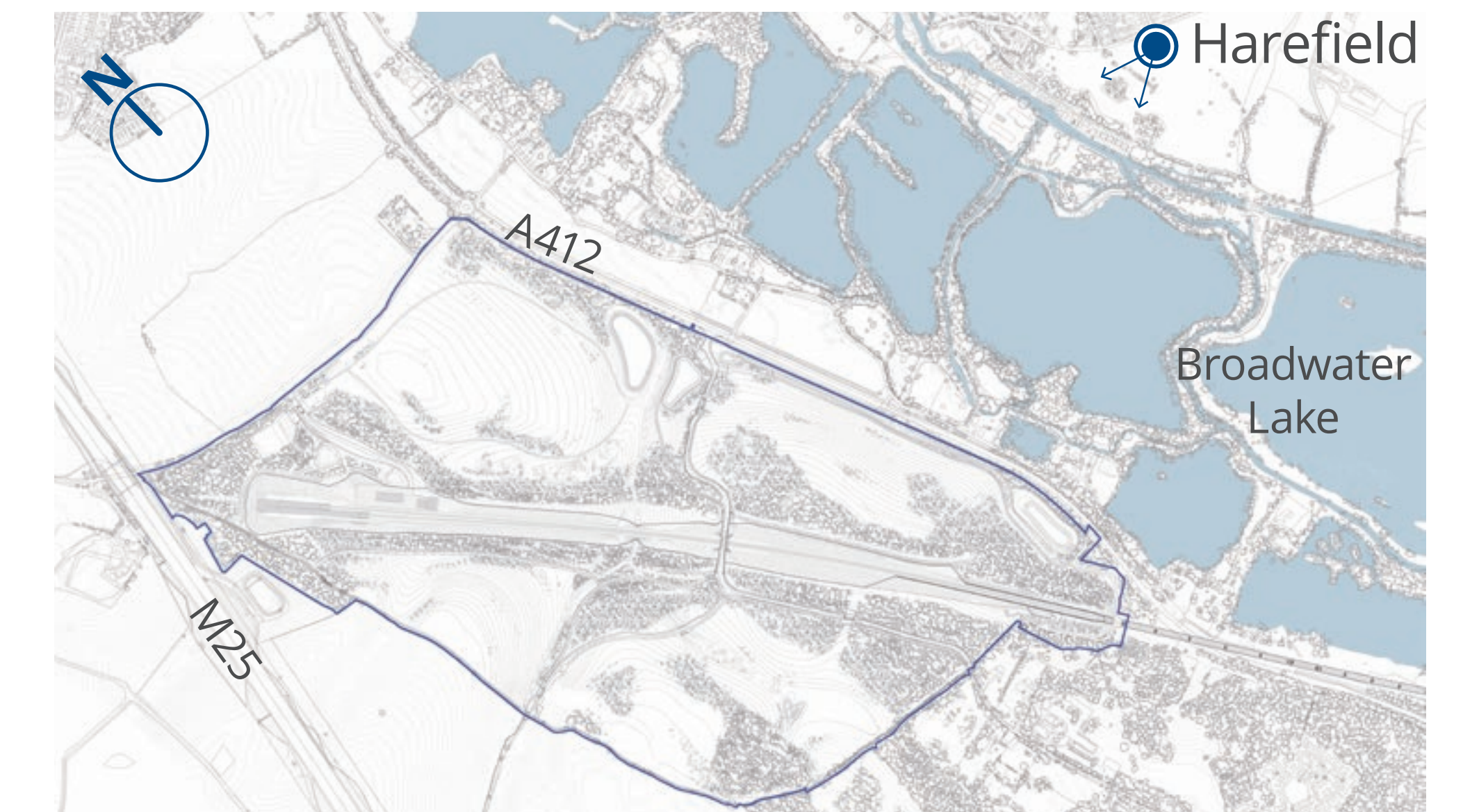
Visitor Experience and Views

We did:

Consider views across the landscape

We have considered how the site looks from other locations within the valley and particularly from areas around Harefield. Our landscape proposals aim to recreate the wooded character of the valley and also introduce areas of open grassland which are more typical of the upper slopes to the west.

We have used planting and earthworks to hide most of the railway in views from the eastern side of the valley and where structures such as the South Portal are visible these are set into areas of vegetation to reduce their impact.



Visualisation location



Visualisation - Ground level view from Park Lane, Harefield looking west (Year 15)

ALIGN

Working in
partnership with

HS2